

**APP ENABLING THE  
EXPORT OF DATA  
REQUIRED BY THE  
LUXEMBURGISH TAX  
AUTHORITIES**

# **eCDF annual accounts**

## **Factsheet**

## What can this app do?

---

APP eCDF XML annual accounts localization Luxembourg is an app enabling the export of data required by the Luxemburgish tax authorities with additional specific fields and format. It is exporting the data of the Chart of account from Business Central, fulfilling the logic of the eCDF portal and generates a balance sheet and profit and loss on a predefined dataset.

In general, you have to upload your data onto the eCDF portal to do your report of the annual accounts (Chart of account, balance sheet and profit and loss). On the one hand, you can enter your data manually. On the other hand, the eCDF portal provides the possibility to upload xml file with a predefined structure and format.

Our app enables you to directly export the data out of your Business Central and puts the data in the xml file the correct way. So you are able to upload the XML file in the eCDF portal without entering your data manually.

## Available Features

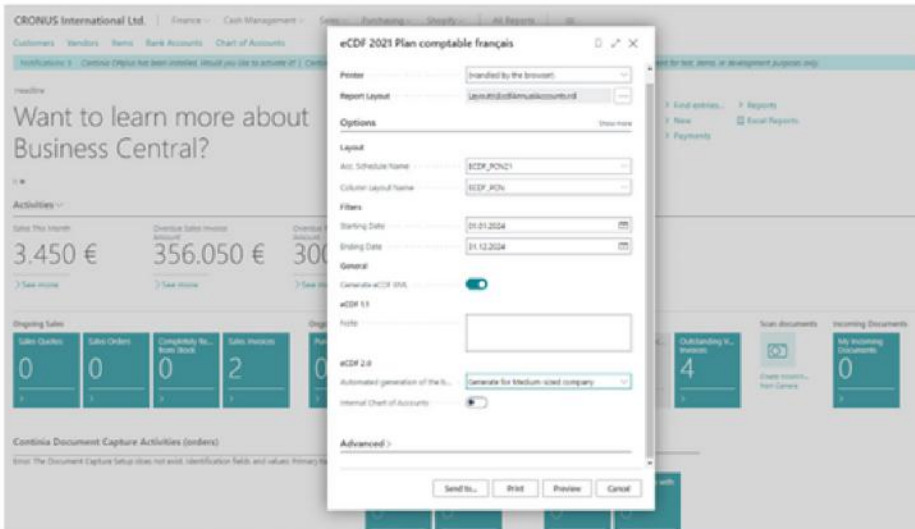
---

- Data-extended fields to ensure that the statement data are compliant with eCDF portal requirements
- Mapping from your Business Central logic to the eCDF portal logic
- Generation of the compliant file for your desired time period

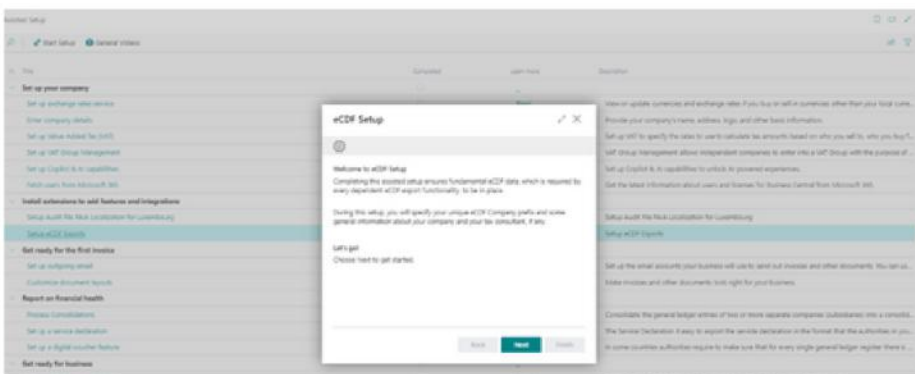
## Benefits

---

- Application based on the global W1 database
- Data of Business Central already mapped to eCDF portal logic. (We also provide a premade row definition you can purchase)
- Automatically creation of the balance sheet and your profit and loss report, based on your chart of accounts
- You save time and effort in reporting your annual accounts. Furthermore, the risk of incorrect manual entry is eliminated by using this app to upload the data into the eCDF portal



eCDF annual accounts export



eCDF exports setup

# CONTACT

## More about this app?

---

For more information, please contact:

Orgavision S.à r.l.  
35, route de l'Europe  
L-5531 Remich

+352 26660091  
[help.orvapp@orgavision.lu](mailto:help.orvapp@orgavision.lu)  
<https://www.orgavision-nav.com>

